

# MATERIAL THICKNESS MEASUREMENT

PROFESSIONAL MEASURING



## SAUTER Pictograms



### Adjusting program (CAL)

For quick setting of the instrument's accuracy. External adjusting weight required



### Calibration block

Standard for adjusting or correcting the measuring device



### Peak hold function

Capturing a peak value within a measuring process



### Scan mode

Continuous capture and display of measurements



### Push and Pull

The measuring device can capture tension and compression forces



### Length measurement

Captures the geometric dimensions of a test object or the movement during a test process



### Focus function

Increases the measuring accuracy of a device within a defined measuring range



### Internal memory

To save measurements in the device memory



### Data interface RS-232

Bidirectional, for connection of printer and PC



### Profibus

For transmitting data, e.g. between scales, measuring cells, controllers and peripheral devices over long distances. Suitable for safe, fast, fault-tolerant data transmission. Less susceptible to magnetic interference



### Profinet

Enables efficient data exchange between decentralised peripheral devices (balances, measuring cells, measuring instruments etc.) and a control unit (controller). Especially advantageous when exchanging complex measured values, device, diagnostic and process information. Savings potential through shorter commissioning times and device integration possible



### Data interface USB

To connect the measuring instrument to a printer, PC or other peripheral devices



### Bluetooth® data interface

To transfer data from the balance/measuring instrument to a printer, PC or other peripherals



### WIFI data interface

To transfer data from the balance/measuring instrument to a printer, PC or other peripherals



### Data interface infrared

To transfer data from the measuring instrument to a printer, PC or other peripheral devices



### Control outputs (optocoupler, digital I/O)

To connect relays, signal lamps, valves, etc.



### Analogue interface

To connect a suitable peripheral device for analogue processing of the measurements



### Analogue output

For output of an electrical signal depending on the load (e.g. voltage 0 V – 10 V or current 4 mA – 20 mA)



### Statistics

Using the saved values, the device calculates statistical data, such as average value, standard deviation etc.



### PC Software

To transfer the measurement data from the device to a PC



### Printer

A printer can be connected to the device to print out the measurement data



### Network interface

For connecting the scale/measuring instrument to an Ethernet network



### KERN Communication Protocol (KCP)

It is a standardized interface command set for KERN balances and other instruments, which allows retrieving and controlling all relevant parameters and functions of the device. KERN devices featuring KCP are thus easily integrated with computers, industrial controllers and other digital systems



### GLP/ISO record keeping

of measurement data with date, time and serial number. Only with SAUTER printers



### Measuring units

Weighing units can be switched to e.g. non-metric. Please refer to website for more details



### Measuring with tolerance range (limit-setting function)

Upper and lower limiting can be programmed individually. The process is supported by an audible or visual signal, see the relevant model



### Protection against dust and water splashes IPxx

The type of protection is shown in the pictogram of. DIN EN 60529:2000-09, IEC 60529:1989 +A1:1999+A2:2013



### ZERO

Resets the display to "0"



### Battery operation

Ready for battery operation. The battery type is specified for each device



### Rechargeable battery pack

Rechargeable set



### Plug-in power supply

230V/50Hz in standard version for EU. On request GB, AUS or US version available



### Integrated power supply unit

Integrated, 230V/50Hz in EU. More standards e.g. GB, AUS or US on request



### Motorised drive

The mechanical movement is carried out by a electric motor



### Motorised drive

The mechanical movement is carried out by a synchronous motor (stepper)



### Fast-Move

The total length of travel can be covered by a single lever movement



### Conformity assessment

Models with type approval for construction of verifiable systems



### DAkkS calibration possible

The time required for DAkkS calibration is shown in days in the pictogram



### Factory calibration (ISO)

The time required for factory calibration is specified in the pictogram



### Package shipment

The time required for internal shipping preparations is shown in days in the pictogram



### Pallet shipment

The time required for internal shipping preparations is shown in days in the pictogram

## SAUTER Models A-Z

281/285	9
283	10
287/289	8
AE 500	43
AFH FAST	45
AFH FD/AFH LD	46
AFI 2.0	47
CB	104
CD	102
CE HSx	96
CE WT	97
CJ	108
CK	102
CO	107
CP	100-101
CR	103
CT	105
CS	106-107
CW	112-114
DA	51
DB	52
DC Y1 · DC Y2	99
FA	11
FC	13
FC 1K-BT	23
FG	22
FH-M	15
FH-S	14
FK	12
FL-M	17
FL-S	16
FS	18-19
FS Set <small>NEW</small>	20-21
HB	72
HD	73
HE (neu)	70
HK-D/-DB	76
HMM/-NP	77
HMO	79
HN-D	78
HO	82-83
JCS <small>NEW</small>	92-93
JCT <small>NEW</small>	58
JIT <small>NEW</small>	90
LB	49
S71	28-29
SD-M	38
SO	85
SP	86
SU	87
SW	88-89
TB	54
TB-US	62
TC	55
TD-US	63
TE	56
TF/TG	57
THM-N	30
TI	74
TI-HE <small>NEW</small>	71
TN-EE	66
TN-GOLD	64
TN-US	67
TO-EE	68
TU-US	67
TVL/-E/-O/XLS	26
TVL-XS	25
TVM-N/-NL/-LB	34-35
TVO	31
TVO-S/-LD	32-33
TVP/-L	27
TVS/-LD	36-37
YKV	95

## SAUTER Customer Consultants

With questions about our products and services, we will be happy to advise you:

Product Specialist Measuring Technology



Irmgard Russo  
Tel. +49 7433 9933-208  
info.sauter@kern-sohn.com

Product Specialist Measuring Technology



Helga Biselli  
Tel. +49 7433 9933-188  
info.sauter@kern-sohn.com

Product Specialist Measuring Technology



Ralf Gutbrod  
Tel. +49 7433 9933-306  
info.sauter@kern-sohn.com

Product Specialist Measuring Technology



Andreas Vossler  
Tel. +49 7433 9933-243  
info.sauter@kern-sohn.com

FR, Maghreb, GB, IE, IS, BE, LU



Maren Möwert  
Tel. +49 7433 9933-132  
Mobil +49 151 46143240  
maren.moewert@kern-sohn.com

DK, SE, FI, NO, PL, LV, LT, EE



Mark Hauder  
Tel. +49 7433 9933-310  
Mobil +49 160 3378426  
mark.hauder@kern-sohn.com

GR, CY, BG, HU, RO, SK, CZ, AL,  
Ex-Yugoslavia, CIS



Ariana Sevcenco  
Tel. +49 7433 9933-203  
Mobil +49 151 72434692  
ariana.sevcenco@kern-sohn.com

North America, Africa, Asia, Middle East,  
Oceania, TR



Corinna Matthes  
Tel. +49 7433 9933-215  
Mobil +49 151 44568364  
corinna.matthes@kern-sohn.com

Germany (PC 4, 7), NL



Taras Mikitisin  
Tel. +49 7433 9933-143  
Mobil +49 171 5590115  
mikitisin@kern-sohn.com

## SAUTER Hotlines

Technical questions about our products?

You will find assistance here quickly: **+49 7433 9933 - ...**



### Service Hotline

→ 199

for general technical questions about your SAUTER product

### SAUTER Measuring Instruments

→ 555

for all technical questions concerning our SAUTER measuring instruments,  
test benches, force measuring accessories (clamps etc.), SAUTER software

### Industrial Scales

→ 333

for all technical questions concerning our basic scales (laboratory & industry),  
pocket balances, school balances, bench scales, price-computing scales,  
platform scales, counting scales, counting systems, floor scales, pallet truck  
scales, crane scales, veterinary scales

### System Solutions Industry 4.0

→ 200

for all technical questions concerning the interlocking of the latest information  
and communication technology with our scales, load cells and measuring devices  
as well as questions about KERN software



5

## Reliable material thickness gauge for daily use

### Features

- External measuring head for difficult-to-access measuring points
- Base plate for adjustment included
- Auto-Power-Off
- Selectable measuring units: mm, inch
- TB 200-0.1US-RED: Can only analyse these materials: cast iron, aluminium, copper, brass, zinc, quartz glass, polyethylene, PVC, grey cast iron, nodular cast iron, steel
- Scope of delivery: Operating instructions, batteries, external measuring head (∅ 8 mm) and ultrasound contact gel
- **I** Delivered in a robust carrying case

### Technical data

- Measuring precision: 0,5 % of [Max]
- Overall dimensions W×D×H 161×69×32 mm
- Battery operation, batteries standard (4×1.5 V AA)
- Net weight approx. 0,30 kg

### Accessories

- External measuring head, 5 MHz, ∅ 6 mm, for thin test materials: measuring range (steel) up to approx. 80 mm, SAUTER ATB-US01, **€ 215,-**
- External measuring head, 5 MHz, ∅ 12 mm, for hot test materials: Measuring range (steel) 3-200 mm at temperatures of up to 300°C, SAUTER ATB-US02, **€ 270,-**
- External measuring head, 5 MHz, ∅ 8 mm, SAUTER ATB-US06, **€ 110,-**
- External measuring head, 5 MHz, ∅ 10 mm, SAUTER ATU-US09, **€ 150,-**
- Ultrasound contact gel, refill pack, approx. 70 ml, SAUTER ATB-US03, **€ 35,-**

STANDARD				OPTION	

Model	Measuring range	Readout	Measuring head	Sound velocity	Price		
					excl. of VAT	Option	Factory Calibration Certificate
SAUTER	mm	[d] mm		m/sec	€	KERN	€
<b>TB 200-0.1US</b>	1,5 – 200	0,1	5 MHz   ∅ 8 mm	500 – 9999	<b>405,-</b>	961-113	159,-
<b>TB 200-0.1US-RED</b>	1,5 – 200	0,1	5 MHz   ∅ 8 mm	500 – 9999	<b>345,-</b>	961-113	159,-



## Compact pocket-sized material thickness gauge

5

### Features

- External measuring head for difficult-to-access measuring points
- Data interface RS-232, included
- AUTO-OFF function to preserve the battery
- Selectable measuring units: mm, inch
- Base plate for adjustment included
- Scope of delivery: Operating instructions, batteries, external measuring head (∅ 8 mm) and ultrasound contact gel
- **1** Delivered in a robust carrying case

### Technical data

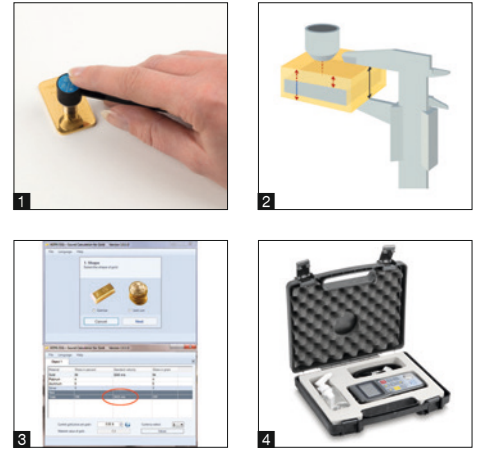
- Measuring precision: 0,5 % of [Max] + 0,1 mm
- Overall dimensions W×D×H 30×65×120 mm
- Battery operation, batteries standard (4×1.5 V AAA)
- Net weight approx. 0,20 kg

### Accessories

- Data transfer software, interface cable included, SAUTER ATC-01, **€ 100,-**
- External measuring head, 5 MHz, ∅ 6 mm, for thin test materials: measuring range (steel) up to approx. 80 mm, SAUTER ATB-US01, **€ 215,-**
- External measuring head, 5 MHz, ∅ 12 mm, for hot test materials: Measuring range (steel) 3-200 mm at temperatures of up to 300°C, SAUTER ATB-US02, **€ 270,-**
- External measuring head, 5 MHz, ∅ 8 mm, SAUTER ATB-US06, **€ 110,-**
- External measuring head, 5 MHz, ∅ 10 mm, SAUTER ATU-US09, **€ 150,-**
- External measuring head, 5 MHz, ∅ 10 mm, transducer at an angle of 90°, SAUTER ATU-US10, **€ 150,-**
- Ultrasound contact gel, refill pack, approx. 70 ml, SAUTER ATB-US03, **€ 35,-**

STANDARD				OPTION	

Model	Measuring range	Readout	Measuring head	Sound velocity	Price excl. of VAT ex works	Option	
		[d] mm			€	Factory Calibration	Certificate
SAUTER	mm			m/sec		KERN	€
<b>TD 225-0.1US</b>	1,2 - 225	0,1	5 MHz   ∅ 8 mm	1000 - 9999	<b>485,-</b>	961-113	159,-



5

## Ultrasonic measuring instrument for checking the authenticity of gold bars and coins

### Features

- **1** You can use the TN-GOLD to determine whether gold or silver bars and coins are genuine or whether they contain a core of a different material
- The instrument measures the thickness of gold bars and gold coins using ultrasound
- **2** Process: Ultrasound waves are directed onto the test object using a sensor. The waves penetrate the test object, are then reflected from a surface opposite the object and then picked up again by the sensor. The measurement determined by this process will be compared with the material thickness as measured by a traditional calliper gauge. On the basis of the measurement given, false cores (Figure: grey) for example, those made of tungsten, lead, etc. can be easily identified, as the ultrasound reacts differently, compared with pure gold
- Selectable measuring units: mm, inch
- **3** SAUTER SSG software (included) can be used to calculate the sound velocity for various precious metal alloys. This makes it possible to determine whether coins or ingots contain false cores or whether they consist of one and the same material. Compatible with the following operating systems: Windows® 7/8/10

- Known additions in tested gold items – e.g. copper or silver – are compensated by the software
- In addition, the software determines the value of the gold item
- It is a test process which measures right through the whole bar or the whole coin without interference and thereby guarantees the highest level of certainty
- Internal memory for up to 20 files (with up to 100 values per file)
- Base plate for adjustment included
- Scope of delivery: Operating instructions, batteries, external measuring head (∅ 6 mm) and ultrasound contact gel
- **4** Delivered in a robust carrying case

### Technical data

- Measuring precision: 0,5 % of [Max] ± 0,04 mm
- Overall dimensions W×D×H 150×74×32 mm
- Battery operation, batteries standard (2×1.5 V AA), AUTO-OFF function to preserve the battery
- Net weight approx. 0,25 kg

### Accessories

- Data transfer software, interface cable included, SAUTER ATU-04, **€ 120,-**
- USB/PC connection cable (USB-A/USB mini), SAUTER FL-A01, **€ 50,-**
- External measuring head, 7 MHz, ∅ 6 mm, for thin test materials: Measuring range 0,75–80 mm (steel), SAUTER ATU-US02, **€ 150,-**
- Ultrasound contact gel, refill pack, approx. 70 ml, SAUTER ATB-US03, **€ 35,-**


STANDARD						OPTION	

Model	Measuring range	Readout	Measuring head	Sound velocity	Price excl. of VAT ex works	Option
		[d] mm		m/sec	€	Factory Calibration Certificate
SAUTER TN GOLD 80	mm 0,75 – 80	0,01	7 MHz   ∅ 6 mm	1000 – 9999	<b>770,-</b>	KERN 961-113 €



## Portable measuring device for ultrasonic material thickness testing

### Features

- External measuring head
- Data interface USB standard (only for models with readout [d] = 0,01 mm)
- Scan mode (10 measurements per sec.) or single point measuring mode possible
- Internal memory for up to 20 files (with up to 100 values per file)
- Selectable measuring units: mm, inch
- Scope of delivery: Operating instructions, batteries, device-specific measuring head and ultrasound contact gel
-  Delivered in a robust carrying case

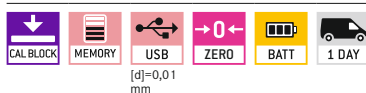
### Technical data

- Measuring precision: 0,5 % of [Max] ± 0,04 mm
- Overall dimensions W×D×H 150×74×32 mm
- Battery operation, batteries standard (2×1.5 V AA), AUTO-OFF function to preserve the battery
- Net weight approx. 0,25 kg

### Accessories

- Data transfer software, interface cable included, SAUTER ATU-04, **€ 120,-**
- External measuring head, 2,5 MHz, ø 14 mm, for thick samples, in particular cast iron with rough upper surfaces: Measuring range 3–300 mm (steel), SAUTER ATU-US01, **€ 230,-**
- External measuring head, 7 MHz, ø 6 mm, for thin test materials: Measuring range 0,75–80 mm (steel), SAUTER ATU-US02, **€ 150,-**
- External measuring head, 5 MHz, ø 10 mm, SAUTER ATU-US09, **€ 150,-**
- External measuring head, 5 MHz, ø 10 mm, transducer at an angle of 90°, SAUTER ATU-US10, **€ 150,-**
- External measuring head, 5 MHz, ø 12 mm, for hot test materials: Measuring range (steel) 3–200 mm at temperatures of up to 300°C, SAUTER ATB-US02, **€ 270,-**
- Ultrasound contact gel, refill pack, approx. 70 ml, SAUTER ATB-US03, **€ 35,-**

#### STANDARD



[d]=0,01 mm

#### OPTION



Model	Measuring range	Readout [d] mm	Measuring head	Sound velocity m/sec	Price	Option	
					excl. of VAT ex works €	Factory Calibration	Certificate €
<b>SAUTER</b>	mm					KERN	
<b>TN 80-0.1US</b>	0,75 – 80	0,1	7 MHz   ø 6 mm	1000 – 9999	<b>630,-</b>	961-113	159,-
<b>TN 230-0.1US</b>	1,2 – 230	0,1	5 MHz   ø 10 mm	1000 – 9999	<b>630,-</b>	961-113	159,-
<b>TN 300-0.1US</b>	3 – 300	0,1	2,5 MHz   ø 14 mm	1000 – 9999	<b>740,-</b>	961-113	159,-
<b>TN 80-0.01US</b>	0,75 – 80	0,01	7 MHz   ø 6 mm	1000 – 9999	<b>700,-</b>	961-113	159,-
<b>TN 230-0.01US</b>	1,2 – 230	0,01	5 MHz   ø 10 mm	1000 – 9999	<b>700,-</b>	961-113	159,-
<b>TN 300-0.01US</b>	3 – 300	0,01	2,5 MHz   ø 14 mm	1000 – 9999	<b>800,-</b>	961-113	159,-



5

## Hand-held measuring device for ultrasonic material thickness testing in Echo-Echo principle

### Features

- External measuring head
- USB data interface, as standard
- Scan mode (10 measurements per sec.) or single point measuring mode possible
- Internal memory for up to 20 files (with up to 100 values per file)
- Selectable measuring units: mm, inch
- Two measuring modes to determine material thickness:
  - Pulse-Echo mode
  - Echo-Echo mode
- Echo-Echo measuring: Determining the actual thickness of materials irrespective of any coating which might be present. In this way, the wall thickness of pipes, for example, can be determined in a non-destructive manner, without having to remove the coating and the measurement can be shown on the display, with the adjustment for the coating thickness already taken into account
- Echo-Echo measurements are only possible with the measuring head included as part of the delivery (SAUTER ATU-US12, see *Accessories*)

- Scope of delivery: Operating instructions, batteries, external measuring head (∅ 10 mm) and ultrasound contact gel
- **1** Delivered in a robust carrying case

### Technical data

- Measuring precision: 0,5 % of [Max] ± 0,04 mm
- Overall dimensions W×D×H 150×74×32 mm
- Battery operation, batteries standard (2×1.5 V AA), AUTO-OFF function to preserve the battery
- Net weight approx. 0,25 kg

### Accessories

- Data transfer software, interface cable included, SAUTER ATU-04, **€ 120,-**
- External measuring head, 5 MHz, ∅ 10 mm, for echo-echo measuring, SAUTER ATU-US12, **€ 345,-**
- Ultrasound contact gel, refill pack, approx. 70 ml, SAUTER ATB-US03, **€ 35,-**

**Note:** All following Pulse-Echo sensors can only be used in Pulse-Echo mode, not in Echo-Echo mode

- External measuring head, 2,5 MHz, ∅ 14 mm, for thick samples, in particular cast iron with rough upper surfaces: Measuring range 3–300 mm (steel), SAUTER ATU-US01, **€ 230,-**
- External measuring head, 7 MHz, ∅ 6 mm, for thin test materials: Measuring range 0,75–80 mm (steel), SAUTER ATU-US02, **€ 150,-**
- External measuring head, 5 MHz, ∅ 10 mm, SAUTER ATU-US09, **€ 150,-**
- External measuring head, 5 MHz, ∅ 10 mm, transducer at an angle of 90°, SAUTER ATU-US10, **€ 150,-**

STANDARD						OPTION	

Model	Measuring range Echo-Echo	Measuring range Puls-Echo	Readout [d] mm	Measuring head	Sound velocity m/sec	Price excl. of VAT ex works €	Option Factory Calibration Certificate	Option Calibration Certificate
<b>SAUTER</b>	mm	mm					KERN	€
<b>TN 30-0.01EE</b>	3 - 30	0,65 - 600	0,01	5 MHz   ∅ 10 mm	1000 - 9999	<b>980,-</b>	961-113	159,-
<b>TN 60-0.01EE</b>	3 - 60	0,7 - 600	0,01	5 MHz   ∅ 10 mm	1000 - 9999	<b>1340,-</b>	961-113	159,-





## Premium ultrasonic thickness gauge

5

### Features

- External measuring head for difficult-to-access measuring points
- Base plate for adjustment included
- **1** USB data interface, as standard
- Scan mode (10 measurements per sec.) or single point measuring mode possible
- Internal memory for up to 20 files (with up to 100 values per file)
- Measuring with tolerance range (limit-setting function): Upper and lower limiting can be programmed individually. The process is supported by an audible and visual signal
- Selectable measuring units: mm, inch
- Robust metal housing
- Scope of delivery: Operating instructions, batteries, device-specific measuring head and ultrasound contact gel
- **2** Delivered in a robust carrying case

### Technical data

- Measuring precision: 0,5 % of [Max] ± 0,04 mm
- Overall dimensions W×D×H 130×76×32 mm
- Battery operation, batteries standard (2×1.5 V AA)
- Net weight approx. 0,50 kg

### Accessories

- Software, interface cable included, SAUTER ATU-04TU, **€ 120,-**
- External measuring head, 2,5 MHz, ø 14 mm, for thick samples, in particular cast iron with rough upper surfaces: Measuring range 3–300 mm (steel), SAUTER ATU-US01, **€ 230,-**
- External measuring head, 7 MHz, ø 6 mm, for thin test materials: Measuring range 0,75–80 mm (steel), SAUTER ATU-US02, **€ 150,-**
- External measuring head, 5 MHz, ø 12 mm, for hot test materials: Measuring range (steel) 3–200 mm at temperatures of up to 300°C, SAUTER ATB-US02, **€ 270,-**
- External measuring head, 5 MHz, ø 10 mm, SAUTER ATU-US09, **€ 150,-**
- External measuring head, 5 MHz, ø 10 mm, transducer at an angle of 90°, SAUTER ATU-US10, **€ 150,-**
- Ultrasound contact gel, refill pack, approx. 70 ml, SAUTER ATB-US03, **€ 35,-**

STANDARD

CAL BLOCK
 MEMORY
 USB
 TOL
 ZERO
 BATT
 1 DAY

OPTION

SOFTWARE
 ISO
 +4 DAYS

Model	Measuring range	Readout	Measuring head	Sound velocity	Price		
					excl. of VAT	Option	Certificate
SAUTER	mm	[d] mm		m/sec	€	KERN	€
TU 80-0.01US	0,75 – 80	0,01	7 MHz   ø 6 mm	1000 – 9999	<b>1310,-</b>	961-113	159,-
TU 230-0.01US	1,2 – 230	0,01	5 MHz   ø 10 mm	1000 – 9999	<b>1310,-</b>	961-113	159,-
TU 300-0.01US	3 – 300	0,01	2,5 MHz   ø 14 mm	1000 – 9999	<b>1410,-</b>	961-113	159,-



5

## Material thickness gauge for ultrasonic material thickness testing in Echo-Echo principle

### Features

- Premium thickness gauge device using ultrasonic technology: New NT measuring technology generation with automatic sensor adjustment (V-path correction for improved accuracy and more rapid display speed)
- Dual measuring modes to determine material thickness:
  - Pulse-Echo mode (up to 600 mm)
  - Echo-Echo mode (up to 100 mm)
- Echo-Echo measurement: Determining the actual thickness of materials regardless of any existing coating, such as, for example, paint or an anti-corrosion coating on the base metal. In this way, the wall thickness, for example of pipes, can be determined in a non-destructive manner, without having to remove the coating and the measurement can be shown on the display, with the adjustment for the coating thickness taken into account
- Can be used on these materials, as well as others: Metals, plastics, ceramics, composite materials, epoxy, glass and other materials
- High-precision mode: Readout accuracy can be switched from 0.1 mm to 0.01 mm
- **1** Premium display with colour TFT display (320x240 mm) with adjustable brightness so that it can be read easily in any environmental conditions

- Large internal data memory for up to 100 data sets each with 100 individual values
- Energy-saving operation with 2x AA batteries and an operating time of at least 30 hours, adjustable power-off time (sleep mode) and adjustable display switch-off (standby mode)
- **2** USB data output for easy data download from the device memory to the PC, as standard
- Triple-calibration mode: Automatic 0-point adjustment, 1-point adjustment at a specified material thickness, 2-point precision adjustment with two specified material thicknesses
- 3 different measurement modes with standard measuring (single measurement), scan mode (for continuous measurement and display of the ACTUAL value, the MIN and MAX value of the measuring sequence) and DIFF mode with calculation of the difference between the ACTUAL measured value and a manually defined nominal thickness
- Limit alarm function: Upper and lower limit adjustable. The measurement process is supported by an audible and visual signal
- Menu languages: DE, EN, FR, ES, IT
- Date and time can be adjusted. It is possible to store the measurement values with a time stamp

- Standard measuring head SAUTER ATU-US12 included with delivery
- Scope of delivery: Operating instructions, batteries, external measuring head (ø 10 mm) and ultrasound contact gel
- **3** Delivered in a robust carrying case
- Interface cable SAUTER FL-A01 (for use of the software) included

### Technical data

- Measuring precision: 0,4 % of [Max] ± 0,04 mm
- Overall dimensions WxDxH 31x69x130 mm
- Battery operation, batteries standard (2x1.5 V AA), AUTO-OFF function to preserve the battery
- Net weight approx. 0,25 kg

### Accessories

- External measuring head, 5 MHz, ø 10 mm, for echo-echo measuring, SAUTER ATU-US12, **€ 345,-**
- Ultrasound contact gel, refill pack, approx. 70 ml, SAUTER ATB-US03, **€ 35,-**
- Software BalanceConnection, for flexible recording or transmission of measured values, in particular also to Microsoft® Excel or Access as well as transfer of this data to other Apps and programs, for more details see internet, scope of supplies: 1 CD, 1 license, KERN SCD-4.0, **€ 210,-**
- Other sensors on request
- Further details and plenty of further accessories see internet [www.kern-sohn.com](http://www.kern-sohn.com)

#### STANDARD



#### OPTION



Modell	Measuring range Echo-Echo	Measuring range Puls-Echo	Readout	Measuring head	Sound velocity	Price excl. of VAT ex works	Option	Factory Calibration Certificate
SAUTER	mm	mm	[d] mm		m/sec	€	KERN	€
TO 100-0.01EE	3 - 100	0,7 - 600	0,01	5 MHz   ø 10 mm	200 - 19999	1490,-	961-113	159,-

**Sauter GmbH**  
 c/o KERN & SOHN GmbH  
 Ziegelei 1  
 72336 Balingen  
 Germany  
 Tel. +49 7433 9933-0  
 info@sauter.eu  
 www.sauter.eu

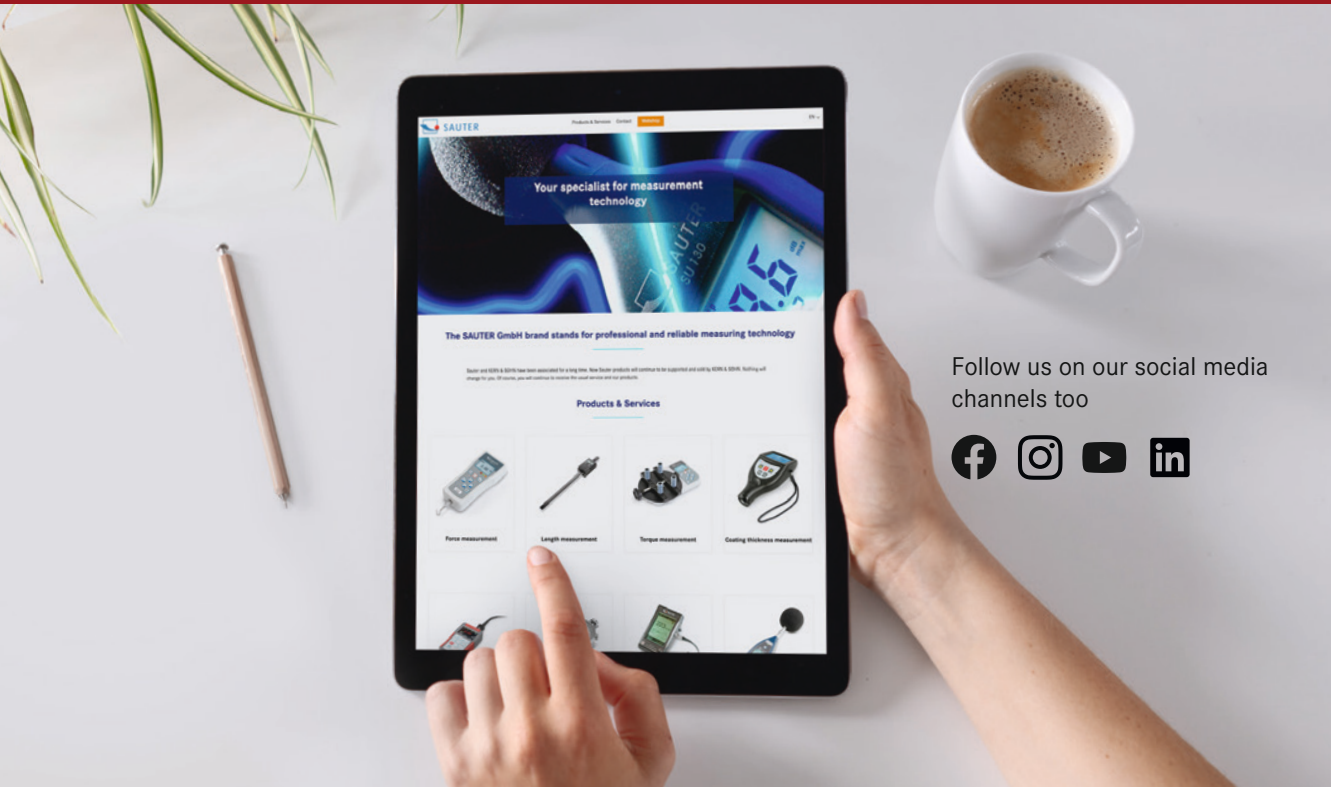
**The oldest Precision Balance  
 Factory in Germany**

**180 YEARS**  
 since 1844  
**KERN & SOHN**

**Discover the multifaceted World of Balances and Measuring Technology from SAUTER  
 online: [www.sauter.eu](http://www.sauter.eu)**



- Full KERN & SAUTER Product Range
- Convenient 24/7 Ordering
- Selection of more than 5,000 Items across Weighing and Measuring Technology, Optical Instruments as well as Accessories and Services
- Extensive Information and useful Download Options
- Technical Product Data Sheets
- Operating Instructions
- Descriptive Image and Video Material
- Useful KERN Services
- Technical Glossary
- KERN Dealer Portal
- Practical Filter and Search Functions



Follow us on our social media channels too



Printed in Germany by SAUTER GmbH  
 z-cs-en-kp-20241

