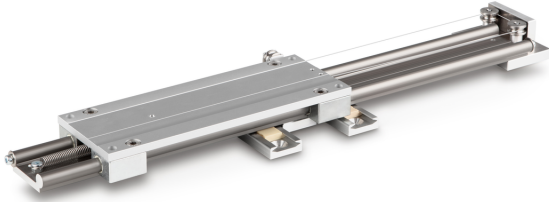


# KERN TPE-N



Universal attachment for test stands for 90 degree peel tests



## Category

Brand	Sauter
Product category	Test bench
Product group	Test stand attachment
Product family	TPE

## Measuring System

Measurable length [Max]	20 cm
-------------------------	-------

## Construction

Dimension (W×D×H)	215×420×50 mm
Dimension housing (W×D×H)	215×420×50 mm
Dimensions completely mounted (W×D×H)	215×420×50 mm
Material display housing	Anodized aluminum
Material housing	metal, lacquered
Generated force [Max]	500 N
Measuring room height [Max]	200 mm

## Packing & Shipping

Readability force [d] (N)	1 d
Dimensions packaging (W×D×H)	580×460×270 mm
Net weight	4,5 kg
Shipping method	Parcel service
Net weight approx.	4,6 kg
Gross weight approx.	7 kg
Shipping weight	14,4 kg

## Pictograms

STANDARD

