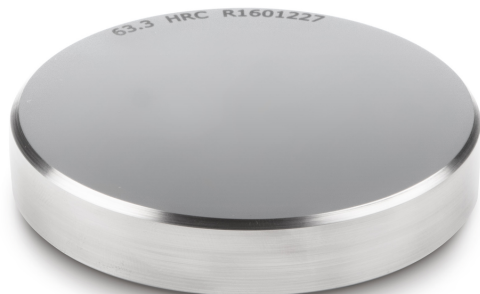


KERN HO-A 11

KERN

Calibration and adjustment plate (hardness test block) with defined and tested steel hardness for regular testing and adjustment of hardness testing devices



Category

Brand	Sauter
Product category	Measurementtechnology
Product group	Hardness test block

Construction

Dimension housing (W×D×H)	90×90×16 mm
Material	Stainless steel
Material housing	stainless steel

Packing & Shipping

Readability force [d] (N)	1 d
Dimensions packaging (W×D×H)	150×150×20 mm
Net weight	0,85 kg
Shipping method	Parcel service
Net weight approx.	0,85 kg
Gross weight approx.	0,90 kg
Shipping weight	0,86 kg

Pictograms

STANDARD

